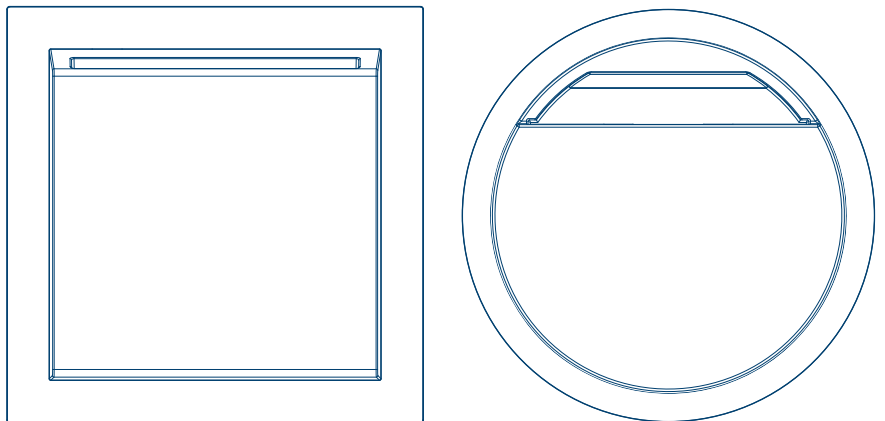


Switch ranges

Relay switch for hotel card



Relay switch for hotel card
WAN7070xx, WLN8010xx

CE

1	Safety instructions.....	3
2	Design and layout of the device.....	4
3	Function.....	5
3.1	Correct use.....	5
3.2	Product characteristics.....	5
4	Operation.....	6
5	Information for qualified electricians.....	7
5.1	Installation and electrical connection.....	7
6	Appendix.....	9
6.1	Technical data.....	9
6.2	Disposal note.....	9

1 Safety instructions

Electrical devices may only be installed and assembled by a qualified electrician in accordance with the relevant installation standards, guidelines, regulations, directives, and safety and accident prevention regulations of the country of installation.

Failure to comply with these installation instructions may result in damage to the device, fire or other dangers.

2 Design and layout of the device

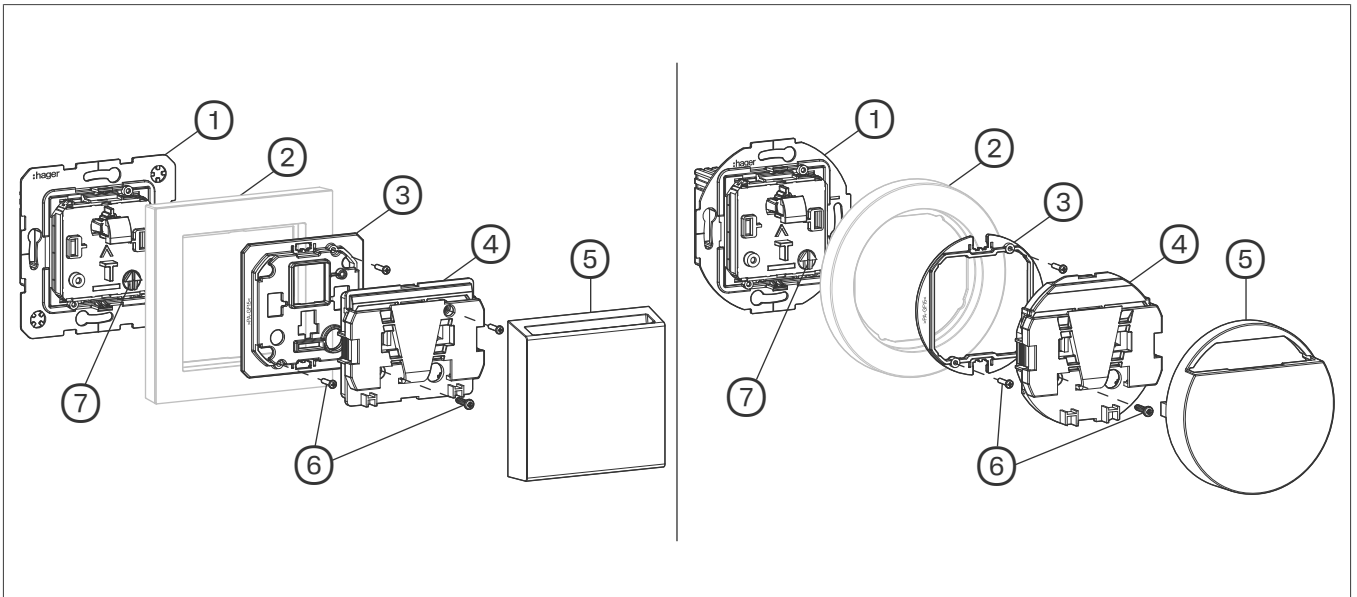


Fig. 1: Layout of the device WAN7070xx (left) / WLN8010xx (right)

- ① Insert
- ② Frame (not in scope of delivery)
- ③ Fixing element
- ④ Hotel card holder
- ⑤ Design cover
- ⑥ Fastening screws
- ⑦ Potentiometer for delay time

3 Function

3.1 Correct use

- Centralised switching of electrical loads by inserting a hotel card
- Storage of the hotel card
- Only suitable for installation in dry and drip-free indoor areas.
- Installation into wall box according to DIN 49073

3.2 Product characteristics

- Delay time of integrated relay adjustable
- Built-in LED as orientation light
- Dismantling protection
- Potential-free relay contact

4 Operation

Switch the loads on/off

☑ The device is ready for operation. The LED in the hotel card holder lights up.

- Insert the hotel card into the holder (4) (Fig. 2).

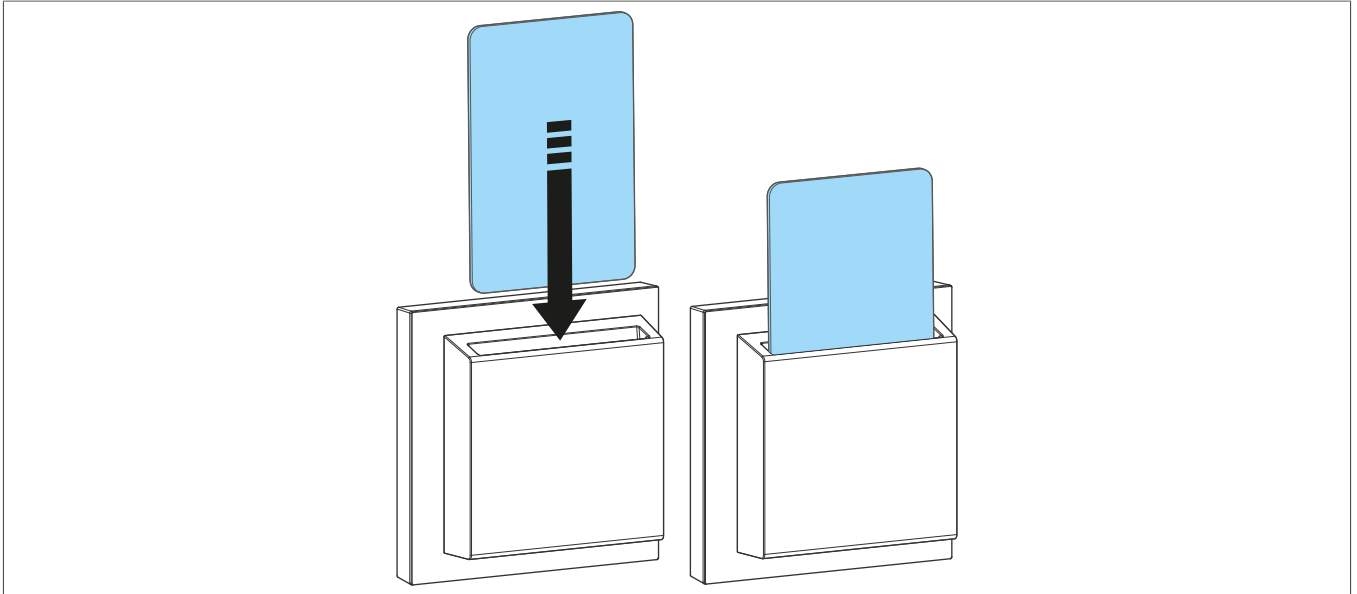


Fig. 2: Insert the hotel card

The LED goes out, connected electrical loads are switched on.

or:

- Remove the hotel card from the holder (4).

The LED lights up, connected electrical loads are switched off after the pre-set delay time.

5 Information for qualified electricians

5.1 Installation and electrical connection



Danger

Electric shock when live parts are touched!
An electric shock can lead to death!

- Disconnect all connection cables before working on the device and cover any live parts in the area!

Connect the device and mount the centre piece

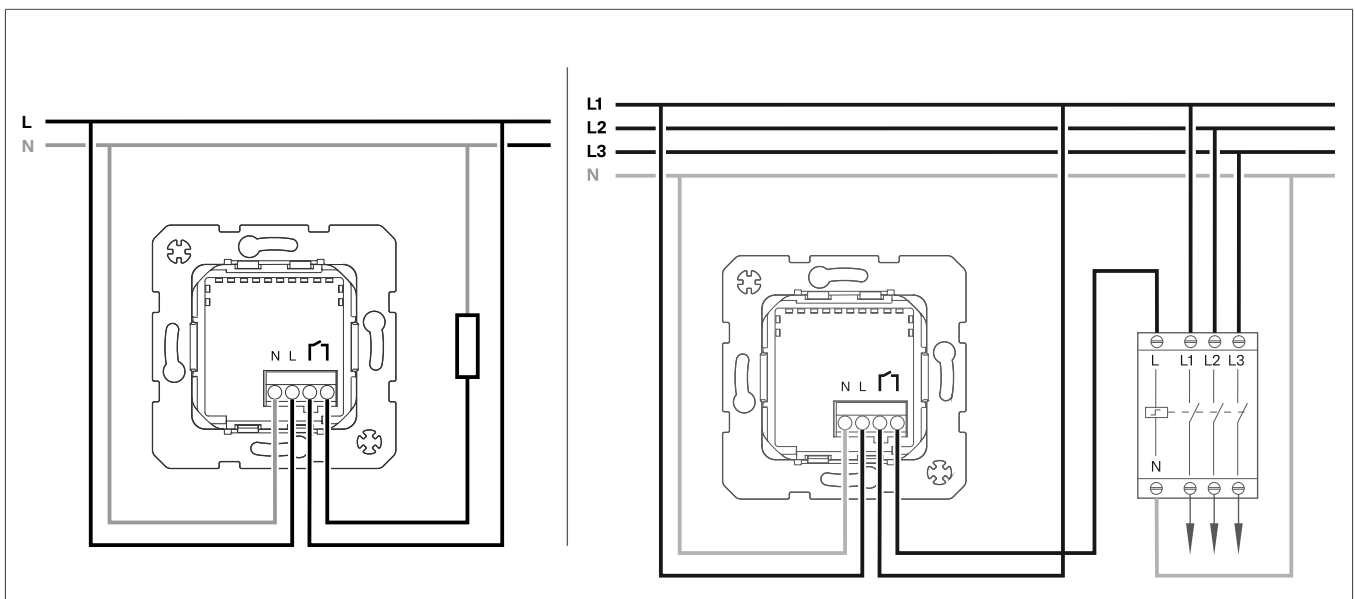


Fig. 3: Connection diagram

L1 ... L3 Outer conductor
N Neutral conductor

- 1 Connect the relay switch insert (1) in accordance with the connection diagram (Fig. 3).



Note

Observe the permissible connected load. If necessary, use load contactor (Fig. 3).

- 2 Position the insert (1) into a wall box. The connection terminals must be at the bottom.
- 3 Fit the frame (2) and screw on with the fixing element (3).
- 4 Attach the hotel card holder (4) and screw it on.
- 5 If necessary, set the delay time.
- 6 Snap the design cover (5) onto the hotel card holder (4).

Dismounting design cover and setting delay time

- 1 Remove the design cover. To do this, insert a slotted screwdriver into the opening of the hotel card holder (Fig. 4) and carefully loosen and remove the design cover, first on the left-hand side **A** and then on the right-hand side **B**.

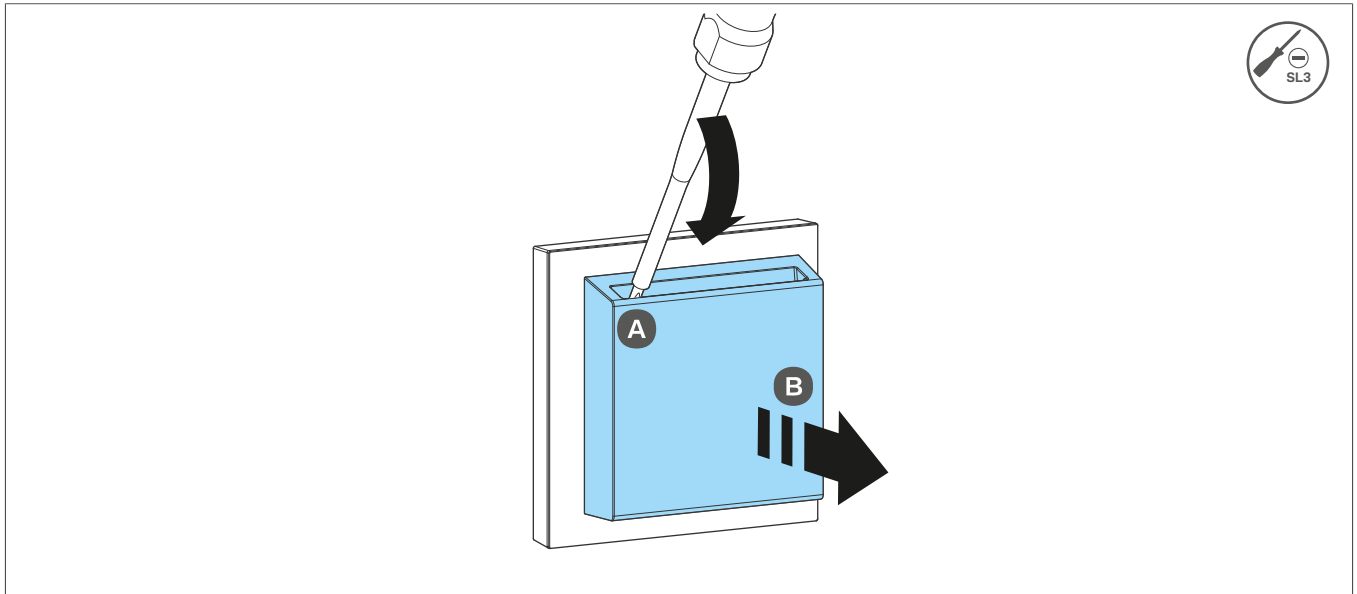


Fig. 4: Removing the design cover

- 2 Run the slotted screwdriver through the recess of the hotel card holder and set delay time by turning the potentiometer (7).



Note

Note the potentiometer labelling: Left stop 0 s, right stop 60 s

6 Appendix

6.1 Technical data

Nominal voltage	AC 230 V~
Rated frequency	50/60 Hz
Switching voltage	AC 230 V~, AC/DC 12 ... 48 V
Switching current at AC 230 V~:	
Ohmic load	Max. 10 A AC1
Motors at $\cos \varphi 0.6$	max. 6 A
Switching current AC/DC 12 V	100 mA ... 8 A
Switching capacity 230 V~:	
230 V incandescent and halogen lamp	1500 W
Conventional transformers	1500 VA
Electronic transformers	1500 W
Fluorescent lamps	1500 VA
Compact fluorescent lamps	200 W
Dimmable 230 V retrofit LED lamps	200 W
Type of contacts	Relay, 1 s, potential-free
Adjustable delay time	0 s, 15 s, 30 s, 60 s
Max. dimensions of the hotel card:	
Width	50 ... 55 mm
Thickness	0.8 ... 1.2 mm
Operating temperature	-5 ... +50°C
Storage temperature	-25 ... +70°C
Degree of protection / protection class	IP20/II
Screw terminal connections:	
Single stranded	0.5 ... 2.5 mm ²
Finely stranded with conductor sleeve	0.5 ... 2.5 mm ²

6.2 Disposal note



Correct disposal of this product (electrical waste).

(Applicable in the European Union and other European countries with separate collection systems)

This marking shown on the product or its documentation indicates that it should not be disposed of with other household waste at the end of its working life. To prevent possible harm to the environment or human health from uncontrolled waste disposal, please separate this device from other types of waste. Recycle the device responsibly to promote the sustainable reuse of material resources.

Household users should contact either the dealer where they purchased this product, or their local government office, for details of where and how they can take this device for environmentally safe disposal.

Commercial users should contact their supplier and check the terms and conditions of the purchase contract. This product should not be mixed with other commercial waste for disposal.



Berker GmbH & Co. KG

Zum Gunterstal

66440 Blieskastel

Germany

T +49 6842 945 0

F +49 6842 945 4625

info@hager.com

hager.com