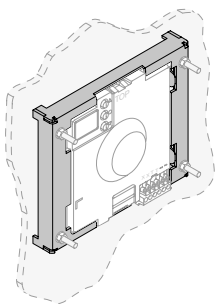
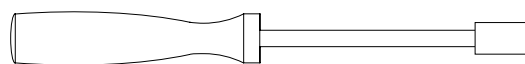
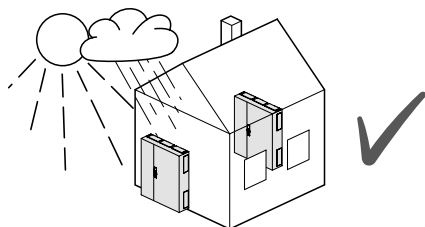


6LE008094B

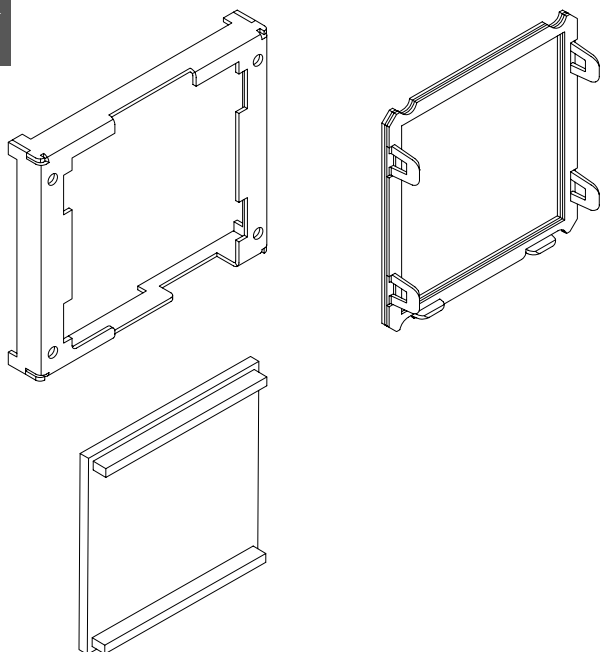


Befestigungs-Kit REK345X

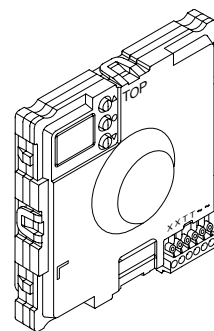
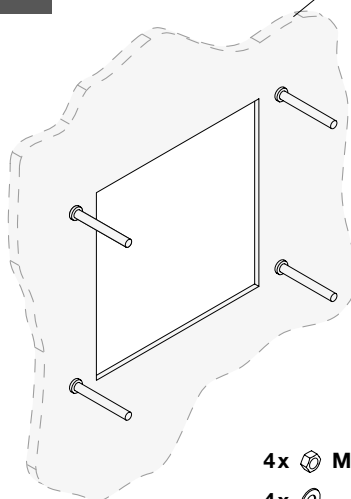
- | | |
|-------------------------------|------------------------------|
| Ⓒ GB Mounting instructions | Ⓒ HR Upute za montažu |
| Ⓒ FR Notice d'instructions | Ⓒ HU Szerelési útmutató |
| Ⓒ DE Montageanleitung | Ⓒ LT Montavimo instrukcija |
| Ⓒ NL Montage instructie | Ⓒ LV Montāžas instrukcija |
| Ⓒ DK Monteringsvejledning | Ⓒ PL Instrukcja montażowa |
| Ⓒ FI Asennusohje | Ⓒ RO Instrucțiuni de montare |
| Ⓒ NO Montasjeanvisning | Ⓒ SK Návod na montáž |
| Ⓒ SE Monterings instruktioner | Ⓒ RU Указания по установке |
| Ⓒ IT Istruzioni di montaggio | Ⓒ BG Инструкции за монтаж |
| Ⓒ ES Instrucciones de montaje | Ⓒ GR --- |
| Ⓒ PT Instruções de montagem | Ⓒ SI Navodilo za montažo |
| Ⓒ CZ Montážní návod | Ⓒ EE Paigaldusjuhised |
| Ⓒ BA Uputstvo za montažu | Ⓒ IS Leiðbeiningar |
| Инструкция з установки | Ⓒ AR --- |



SW 6 / 7



Optimale Materialstärke: 2 mm

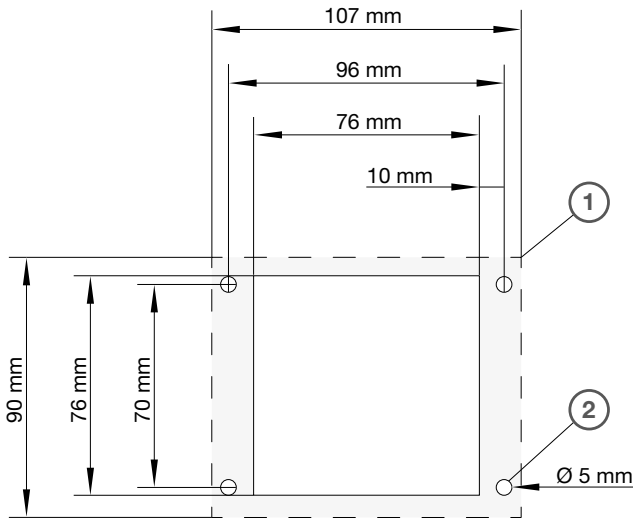


4x Ⓜ M3 / M4

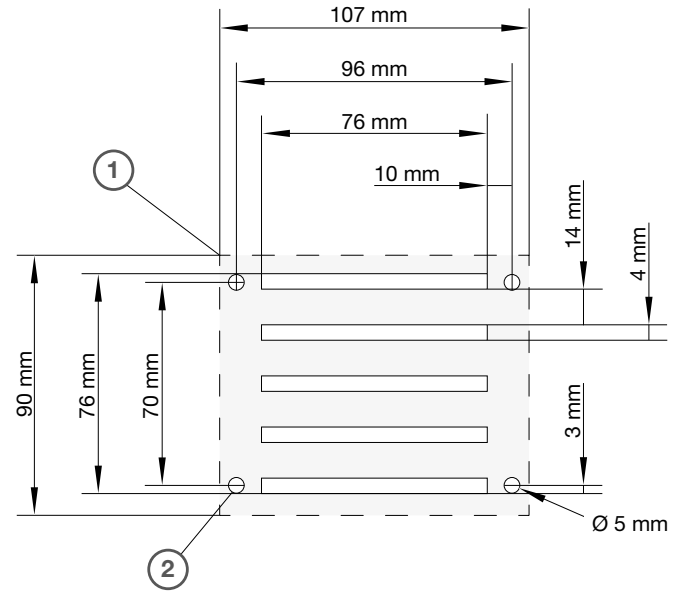
4x Ⓞ



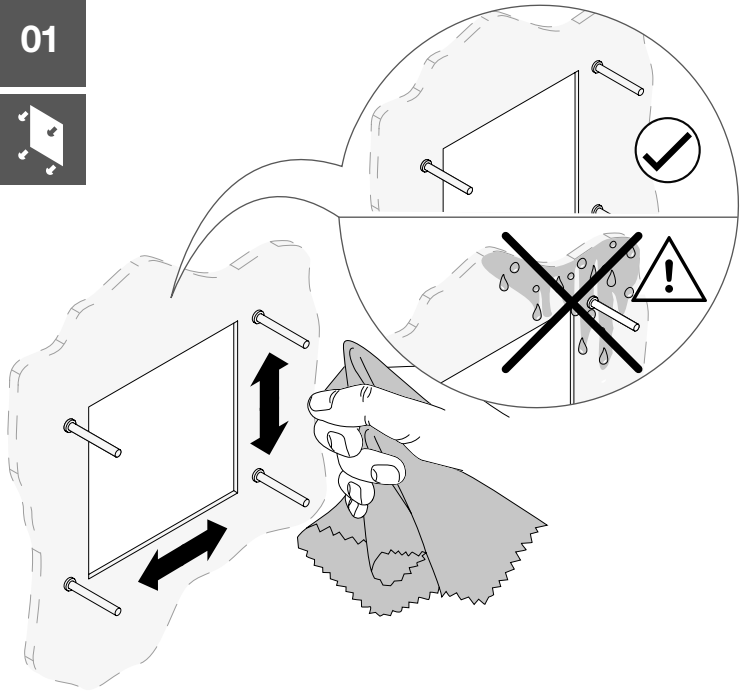
Für: REU610X, REU612X, REU410X,
REU041X, REU042X, REU044X,
REU790X, REU791X, REU792X



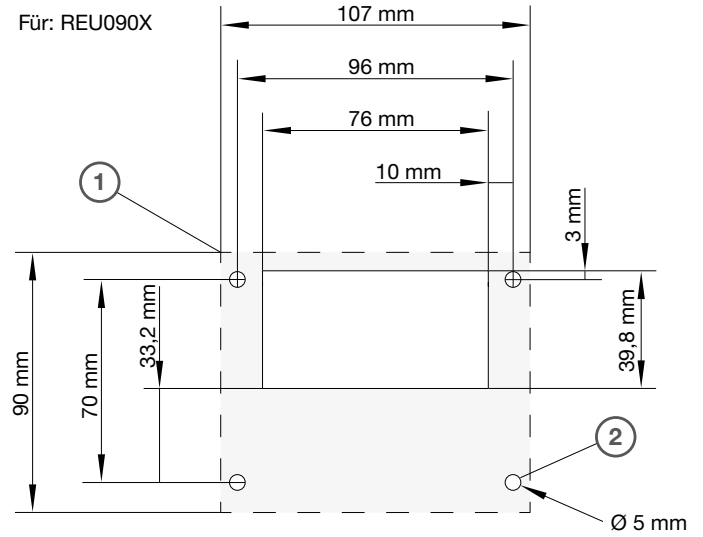
Für: REU411X



01

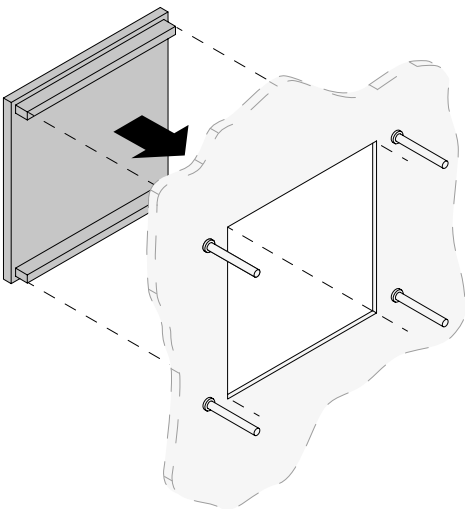


Für: REU090X

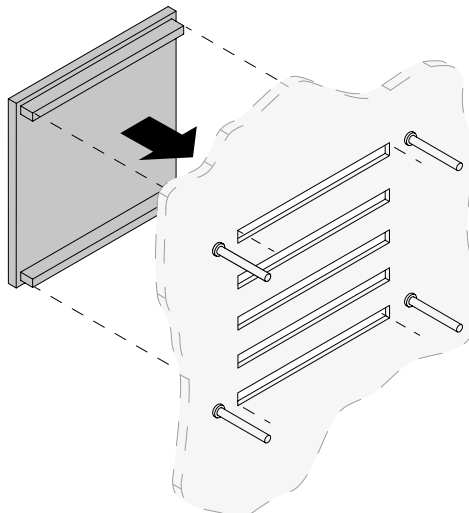


- ① Tiefe Stabrahmen 16 mm
Achtung: Tiefe für Einbaugeräte min. 25 mm
- ② Position Gewindebolzen
Außengewinde M3 oder M4, Mindestlänge 22 mm

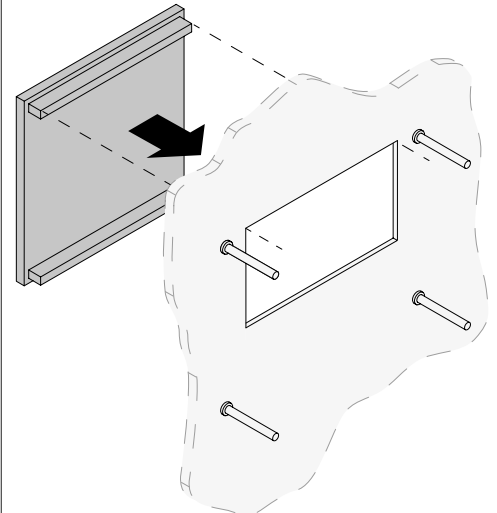
02a



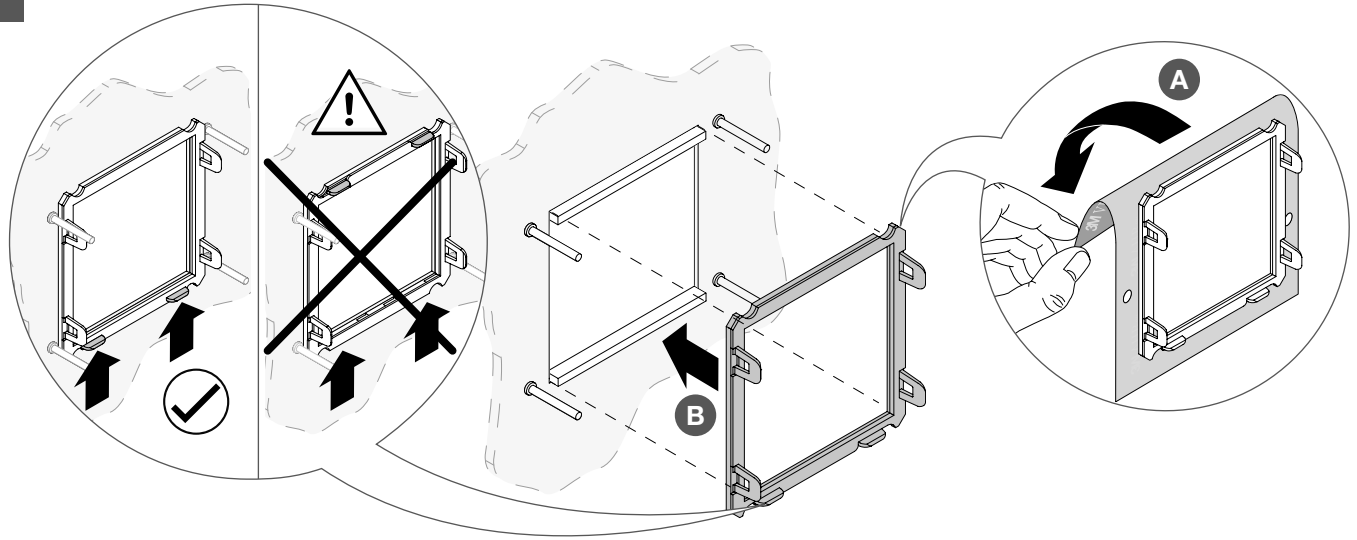
02b



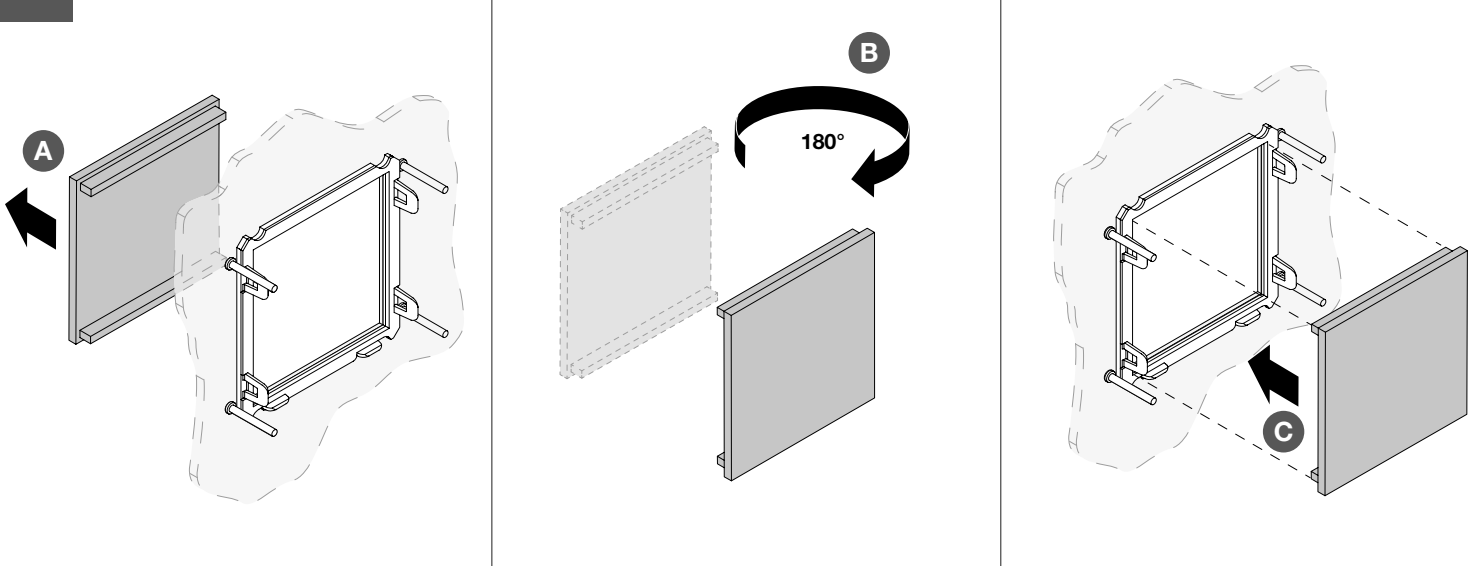
02c



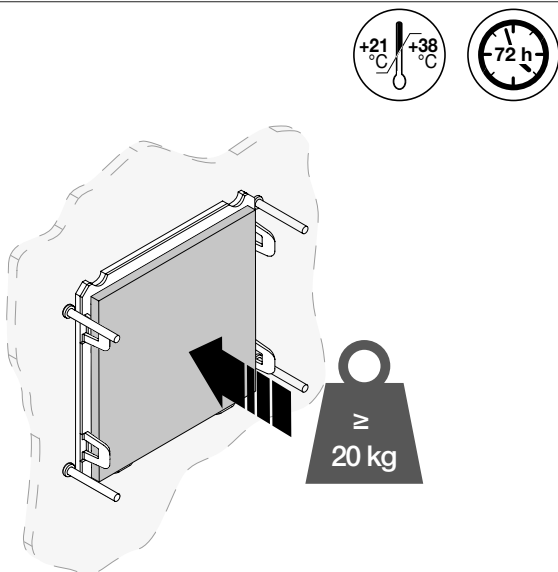
03



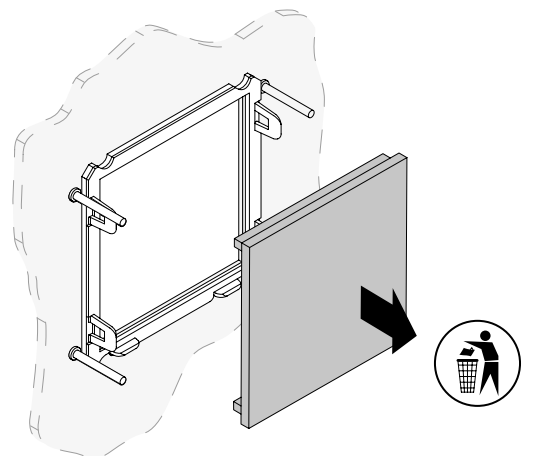
04



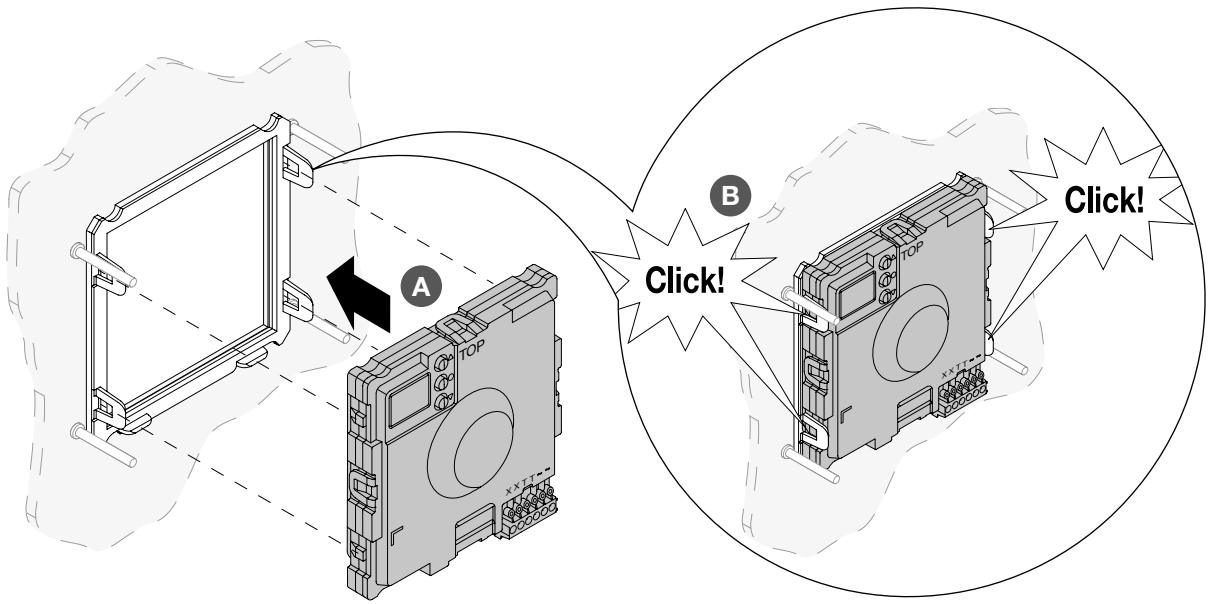
05



06



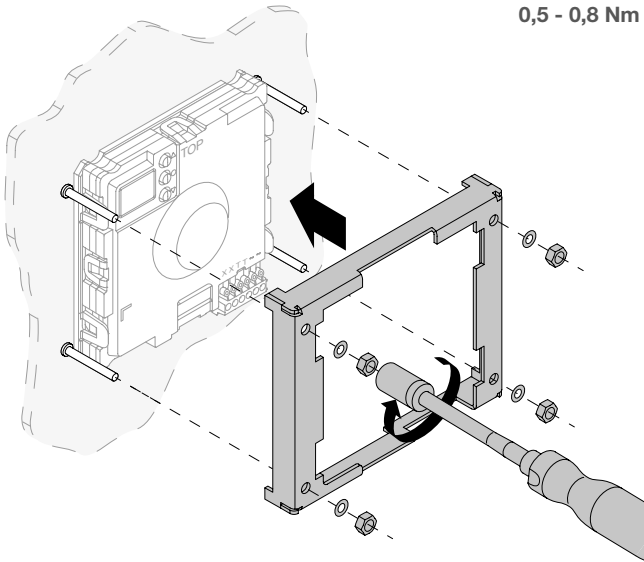
07



08



0,5 - 0,8 Nm



09

