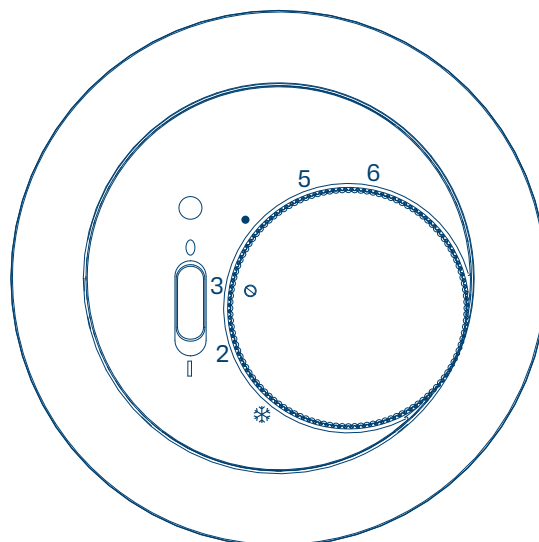


# Switch ranges

## Temperature controller



Temperature controller, change-over contact

**WLN5026xx**

Temperature controller, NC contact with rocker switch

**WLN5030xx**



<b>1</b>	<b>Safety instructions.....</b>	<b>3</b>
<b>2</b>	<b>Design and layout of the device.....</b>	<b>4</b>
<b>3</b>	<b>Function.....</b>	<b>5</b>
3.1	Intended use.....	5
<b>4</b>	<b>Operation.....</b>	<b>6</b>
<b>5</b>	<b>Information for qualified electricians.....</b>	<b>7</b>
5.1	Installation and electrical connection.....	7
5.2	Commissioning.....	9
<b>6</b>	<b>Appendix.....</b>	<b>11</b>
6.1	Technical data.....	11
6.2	Disposal note.....	11

# 1 Safety instructions

Electrical devices must only be installed and assembled by a qualified electrician in accordance with the relevant installation standards, guidelines, regulations, directives, safety and accident prevention directives of the country.

Failure to comply with these installation instructions may result in damage to the device, fire or other hazards.

## 2 Design and layout of the device

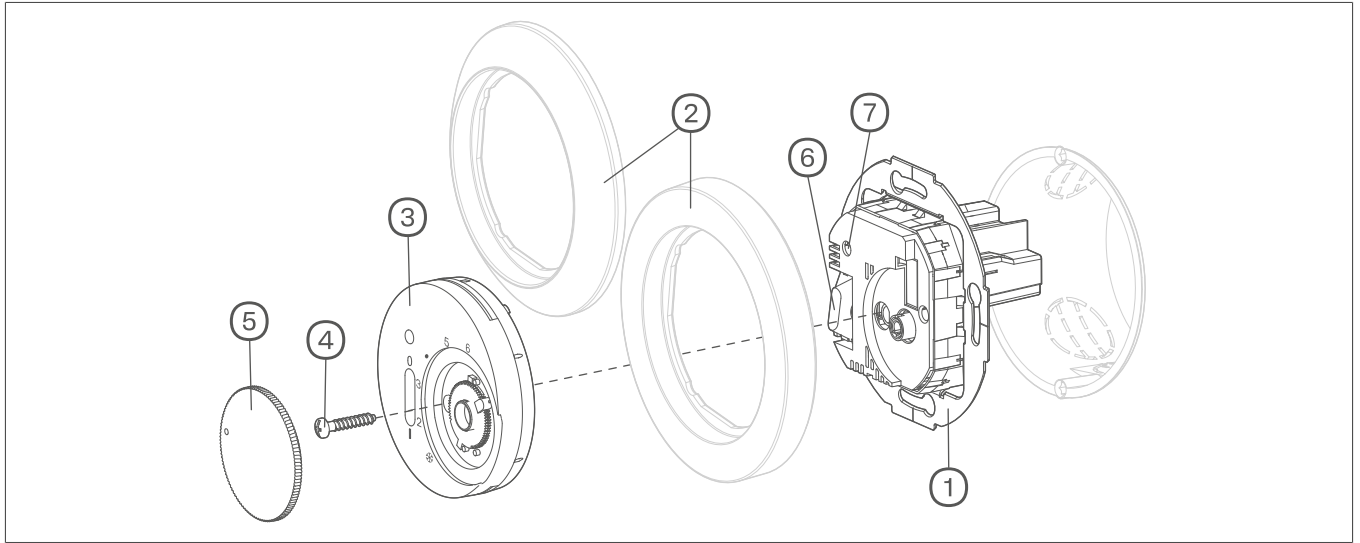


Fig. 1: Design and layout of the device WLN5030xx

- ① Thermostat module
- ② Cover frame Serie 1930/R.classic (not included)
- ③ Centre piece with scale
- ④ Fastening screw
- ⑤ control knob

**For WLN5030xx also includes:**

- ⑥ On/off switch
- ⑦ Control LED


## 3 Function

The thermostat controls the temperature in indoor locations. It is controlled using the measured value provided by the internal temperature sensor.

### Temperature lowering

The time-controlled change-over from day to night temperature can be carried out using an external time switch. This reduces the set temperature by approx. 4°C.

### Room thermostat, NC contact (reference no. WLN5030xx):

If the room temperature falls below the setpoint, then the bi-metal contact closes the heating load circuit until the desired temperature is reached. The control LED  lights up.



#### Note

When the on/off switch  is in the **0** position, the room thermostat is inactive.

### Room thermostat, change-over contact (reference no. WLN5026xx):

If the room temperature falls below the setpoint, then the bi-metal contact closes the heating load circuit.

If the room temperature exceeds the set temperature, then the bi-metal contact closes the cooling load circuit.

## 3.1 Intended use

- For indoor temperature control
- Only suitable for indoor applications
- Installation in wall box according to DIN 49073 (deep box recommended)

## 4 Operation

### Setting the temperature

The scale is used for visual orientation when setting the temperature.

Setting value (scale)	❄	2	3	●	5	6
Temperature [°C]	5	10	15	20	25	30

Table 1: Setting values of the setting knob

- Turn the setting knob (5) to the desired setting.

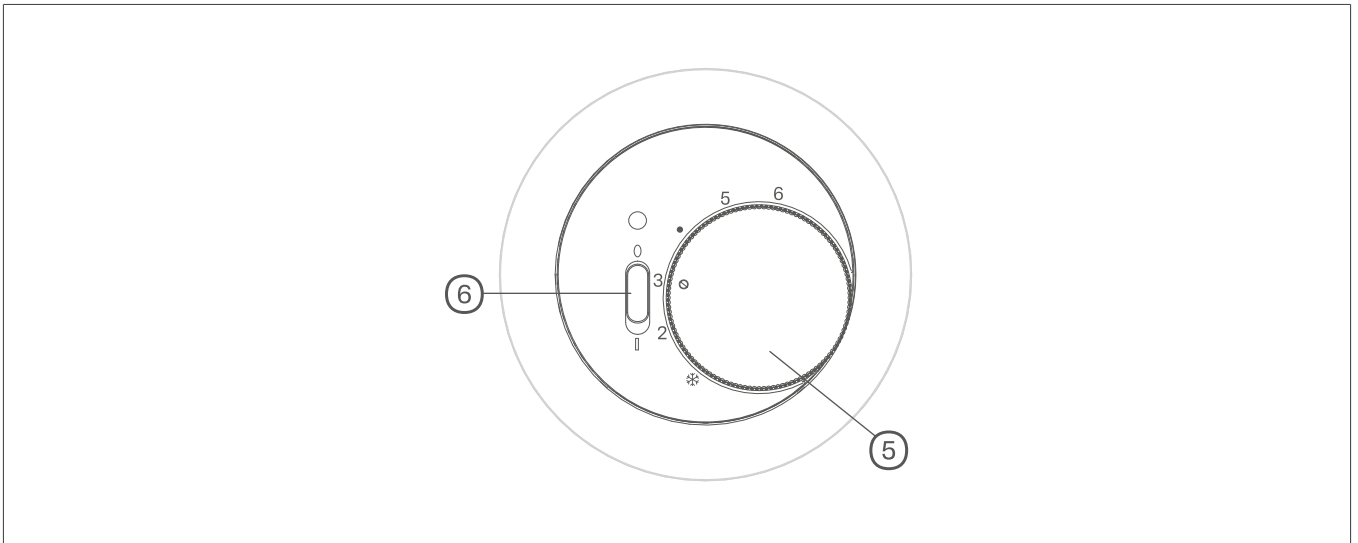


Fig. 2: Control elements

- ⑤ Setting knob

**The WLN5030xx also features:**

- ⑥ On/off switch

## 5 Information for qualified electricians

### 5.1 Installation and electrical connection



**Danger**

Electric shock when live parts are touched!

An electric shock can lead to death!

- Disconnect all connection cables before working on the device and cover any live parts in the area!

#### Selecting the location for installation

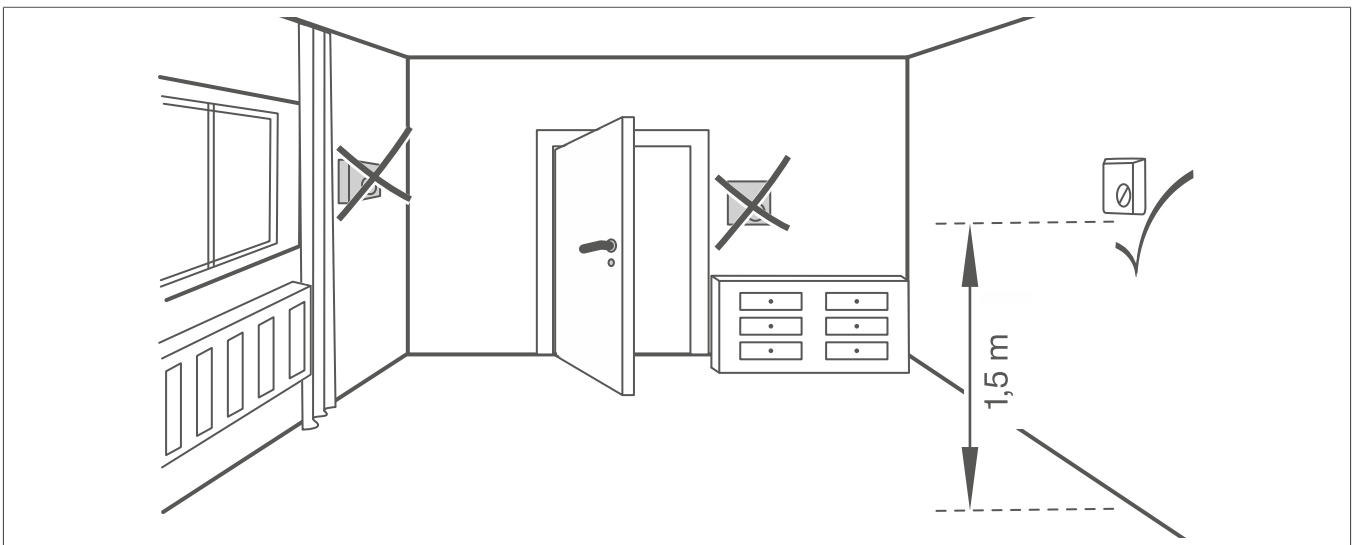


Fig. 3: Recommended installation location

- An inside wall opposite the heating source is the preferred installation location.
- Optimal installation height approx. 1.5 m above the floor.
- Avoid drafts near windows and doors.
- The heated room air should reach the controller without hindrance. Do not mount the controller within shelving units or behind curtains and similar coverings.
- Extraneous heat affects the control accuracy. Avoid direct sunlight and do not install near televisions, radios and heating appliances, lamps, chimneys and heating pipes.
- Avoid mounting in combination with dimmers. If necessary, maintain the greatest possible distance between the two devices. In the case of an arrangement one above the other, the controller must be arranged below the dimmer.
- When mounting the device in hollow walls, ensure that the controller is not exposed to any outside heating or cooling from air draughts or rising cables, also on the rear side.



**Note**

Do not exceed an approved relative humidity of max. 95%. Avoid condensation.

**Connection and installation of the device**

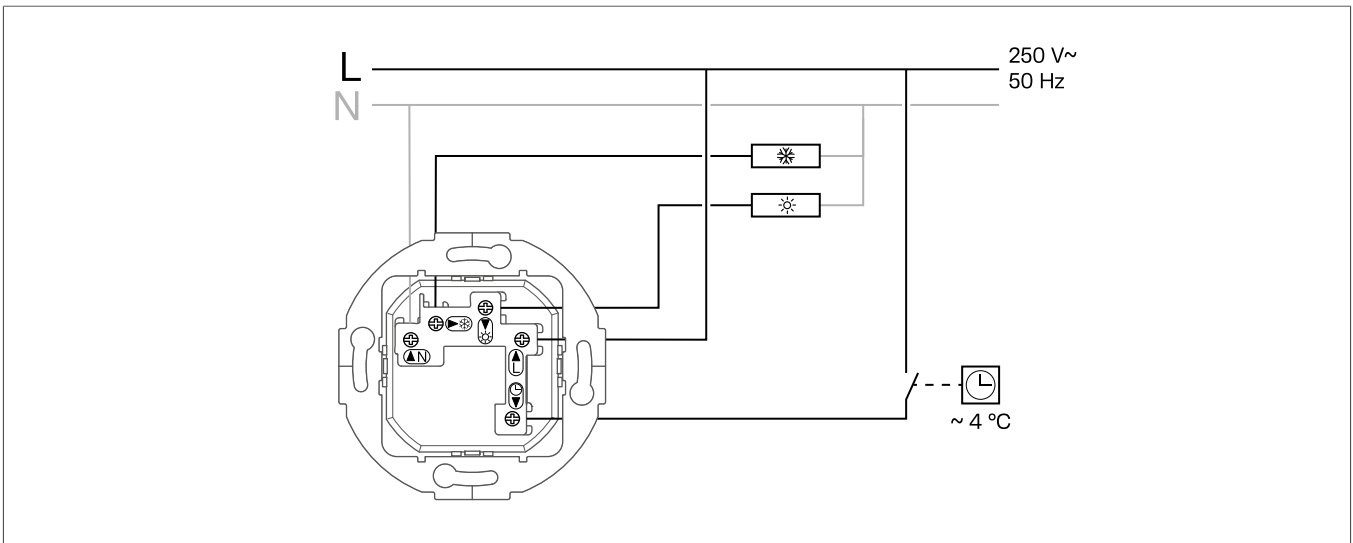


Fig. 4: Connection diagram for room thermostat, change-over contact

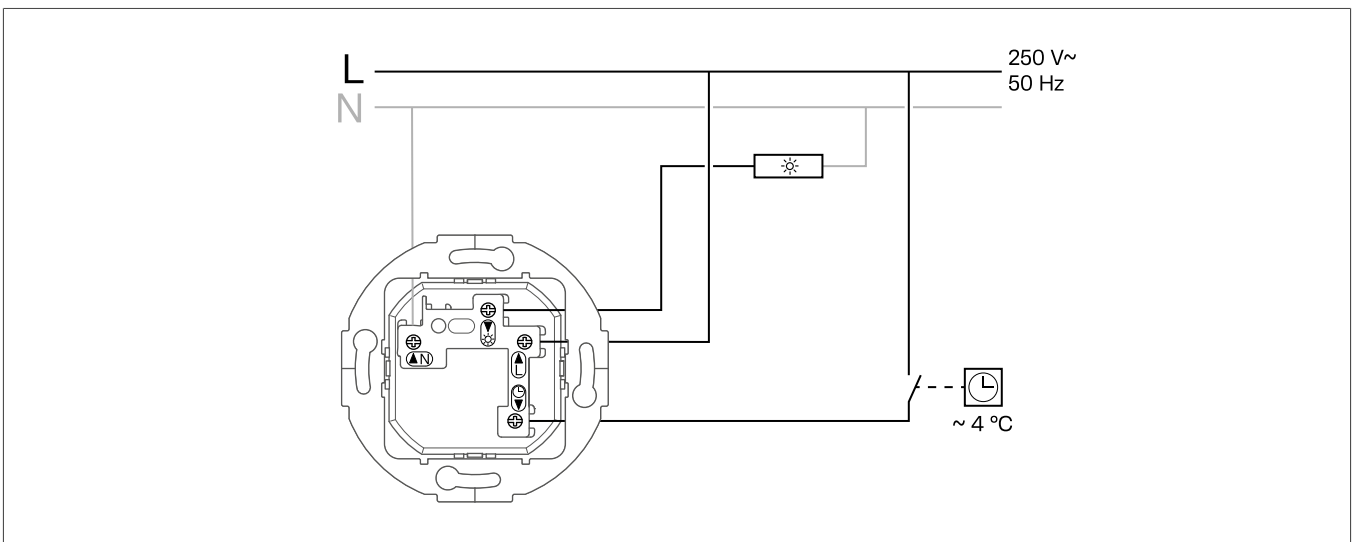


Fig. 5: Connection diagram for room thermostat, NC contact

- L** Outer conductor (phase)
- N** Neutral conductor
- Temperature lowering
- Load connection, heating
- Load connection, cooling

- 1 Wire the controller (1) according to the connection diagram (Fig. 4 or Fig. 5).
- 2 **On the WLN5030xx:**  
Insert the rocker into the right-hand opening of the on/off switch (6).
- 3 Position the centre piece (3) correctly over the cover frame (2) and secure it using the fastening screw (4).
- 4 Attach the setting knob (5).



**Serie 1930**

Integration into the Serie 1930 is only possible using 1-gang cover frames with Ø a 58-mm cut-out (WTD3191xx). Installation in multiple-gang combinations is not possible.

**5.2 Commissioning**



**Note**

The bi-metal element in the controller requires a certain amount of time to adjust itself to the room temperature. For this reason, the switching point will deviate from the room temperature directly after installation. Switching point accuracy will only occur after approx. 1 to 2 operating hours.

**Limiting the setting range**

The temperature setting range can be limited individually using two setting rings under the setting knob.

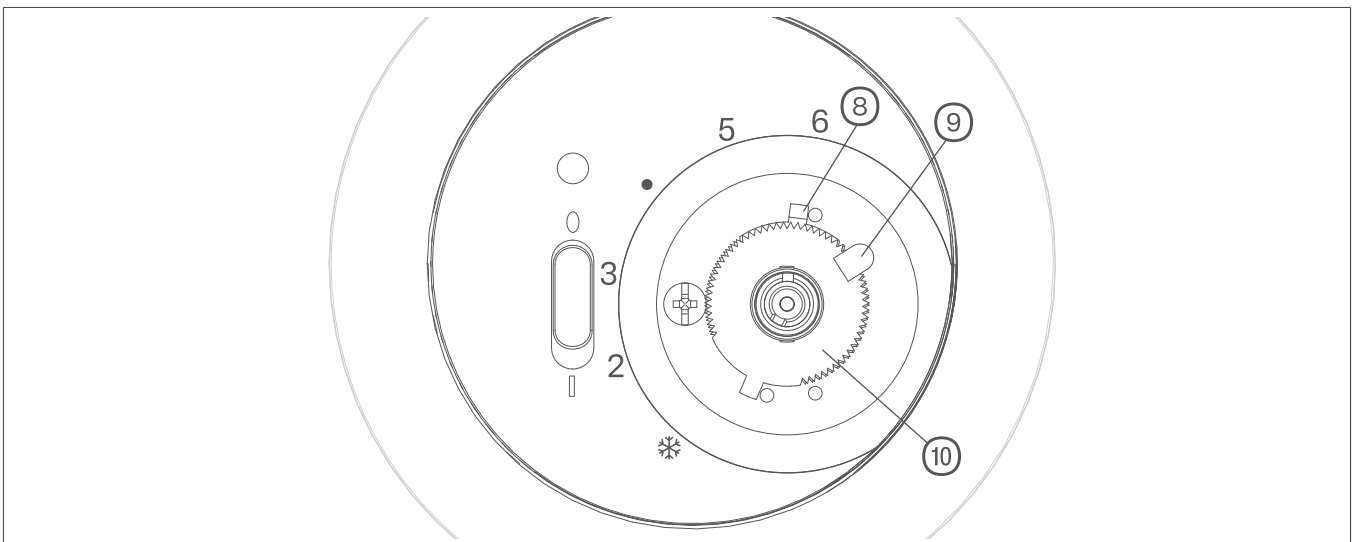


Fig. 6: Limiting the setting range on the centre piece

- ⑧ Setting ring, maximum temperature (red)
- ⑨ Locking pin
- ⑩ Setting ring, minimum temperature (blue)



**Note**

It is not necessary to switch off the mains voltage to limit the temperature range.

- ① Remove the setting knob (5).
- ② Pull out the locking pin (9) so that the setting rings can be moved freely against each other.
- ③ To set the maximum setpoint, turn the red setting ring (8) in an anti-clockwise direction into the required position.
- ④ To set the minimum setpoint, turn the blue setting ring (10) in a clockwise direction into the required position.
- ⑤ Push in the locking pin up to the stop.  
The setting rings are locked again.

- 6 Attach the setting knob. When doing this, ensure that the nose on the rotation axis is guided into the appropriate cut-out in the holder of the controller.

The temperature can be adjusted within the permitted setting range.



#### Note

In the as-delivered state, the maximum setting range of the room thermostat (+5 ... +30 °C) is enabled.

## 6 Appendix

### 6.1 Technical data

Operating voltage	AC-1 250 V~, 50 Hz
<b>Switching current</b>	
Heating	10 (4) A
Cooling (WLN5026xx only)	5 (2) A
Temperature setting range	+5 ... +30°C
Night selection	approx. 4 °C
Operating temperature	0 ... +40°C
Storage temperature	-20 ... +70°C
Switching difference temperature	approx. 0.5 K
Internal probe	Bimetal, type 1C
<b>Outputs</b>	
Reference no. WLN5026xx	Relays, 1 NC/1 NO
Reference no. WLN5030xx	Relays, 1 NC
Pollution degree	2
Relative humidity	0 ... 95 % (without condensation)
Degree of protection	IP20
Protection class (when fully assembled)	II
Voltage & current for EMC emission test	230 V/50 Hz
Rated surge voltage	4 kV
Action type	1 C
Software class(es) and structure	Class A
Temperature of the ball pressure test	125 °C
<b>Screw terminal connections</b>	
Single stranded	0.5 ... 2.5 mm <sup>2</sup>
Finely stranded with conductor sleeve	0.5 ... 2.5 mm <sup>2</sup>

### 6.2 Disposal note



Correct disposal of this product (electrical waste).



**(Applicable in the European Union and other European countries with separate collection systems)**

This marking shown on the product or its documentation indicates that it should not be disposed of with other household waste at the end of its working life. To prevent possible harm to the environment or human health from uncontrolled waste disposal, please separate this device from other types of waste. Recycle the device responsibly to promote the sustainable reuse of material resources.

Household users should contact either the dealer where they purchased this product, or their local government office, for details of where and how they can take this device for environmentally safe disposal.

Commercial users should contact their supplier and check the terms and conditions of the purchase contract. This product should not be mixed with other commercial waste for disposal.



**Berker GmbH & Co. KG**

Zum Gunterstal

66440 Blieskastel

Germany

T +49 6842 945 0

F +49 6842 945 4625

info@hager.com

**hager.com**