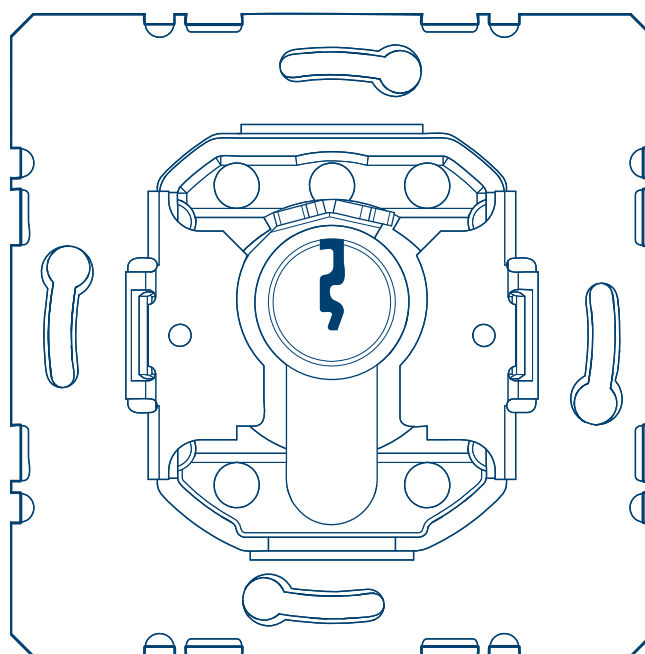


Switch ranges

Key switches/ push-buttons



Key switches/key push-buttons (for blinds)
WDE382xx0, WDE383xx0, WDE385xx0

CE

1	Product overview.....	3
2	Safety instructions.....	4
3	Design and layout of the device.....	5
4	Function.....	6
4.1	Intended use.....	6
5	Information for qualified electricians.....	7
5.1	Installation and electrical connection.....	7
6	Appendix.....	10
6.1	Technical data.....	10
6.2	Accessories.....	10
6.3	Disposal note.....	10

1 Product overview









Reference number	Product designation	Electrical symbols
WDE383620	Key change-over switch for profile half cylinders	
WDE382610	Key change-over switch, 2-pole, for profile half cylinders	
WDE385620	Key push button for profile half cylinders	
WDE382120	Key switch for blinds for profile half cylinders	
WDE382210	Key switch for blinds, 2-pole, for profile half cylinders	
WDE383110	Key push button for blinds for profile half cylinders	
WDE383120	Key push button for blinds for profile half cylinders with earthing contact	
WDE383210	Key push button for blinds, 2-pole, for profile half cylinders	

Table 1: Product variants for lighting and blind control

2 Safety instructions

Electrical devices must only be installed and assembled by a qualified electrician in accordance with the relevant installation standards, guidelines, regulations, directives, safety and accident prevention directives of the country.

Failure to comply with these installation instructions may result in damage to the device, fire or other hazards.

3 Design and layout of the device

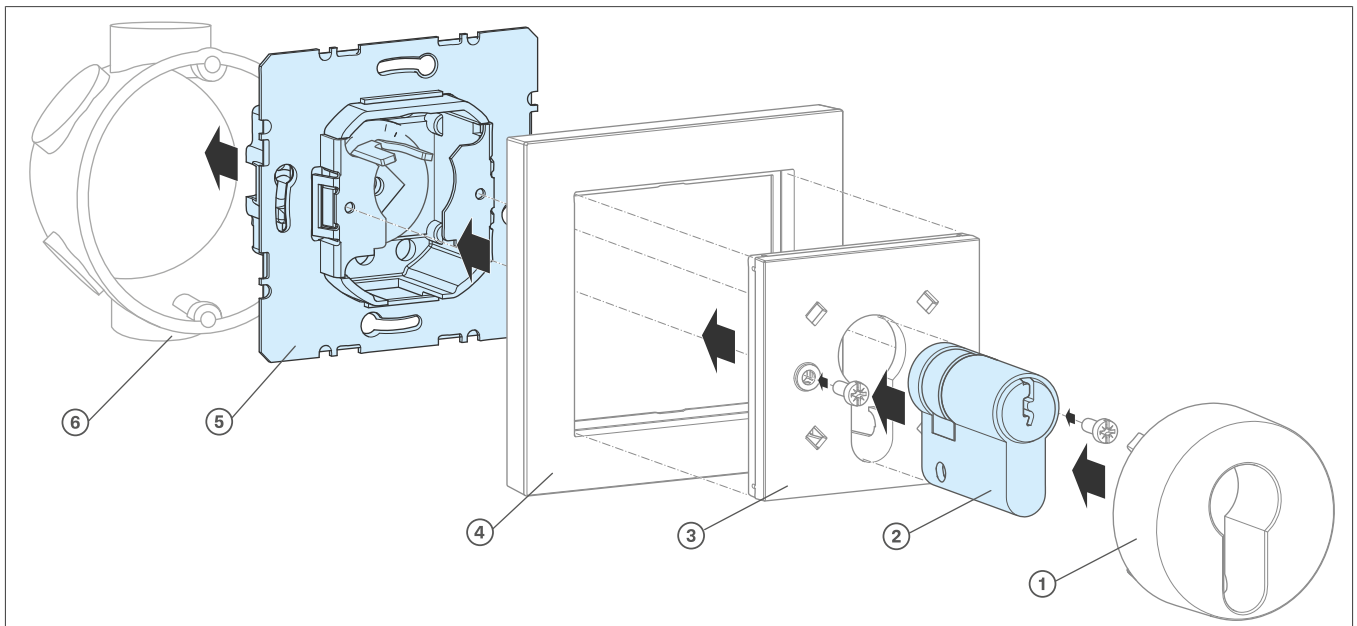


Fig. 1: Design and layout of the device

- ① Cover
- ② Profile half cylinder^[2]
- ③ Centre plate
- ④ Frame^[1]
- ⑤ Switch/push-button insert
- ⑥ Wall box^[1]

^[1] Not included in the scope of delivery!

^[2] Not included in the scope of delivery with all product variants!

4 Function

Key switches/key push-buttons are used to prevent unauthorised operation of the connected loads.

4.1 Intended use

- For profile half-cylinders according to DIN with a length of 40 mm
- Installation into wall box according to DIN 49073, part 1 with screw fastening
- Only suitable for indoor use or - with corresponding sealing set IP44 - for protected outdoor use



Recommendation:

Use a profile half cylinder with an adjustable lock bit to allow adaptation of the locking behaviour to various requirements.

5 Information for qualified electricians

5.1 Installation and electrical connection

Adjusting the lock bit on the profile half cylinder

The lock bit position of some profile half cylinders (reference no. WDA717xx) can be changed in 45° increments when the key is removed (Fig. 2).

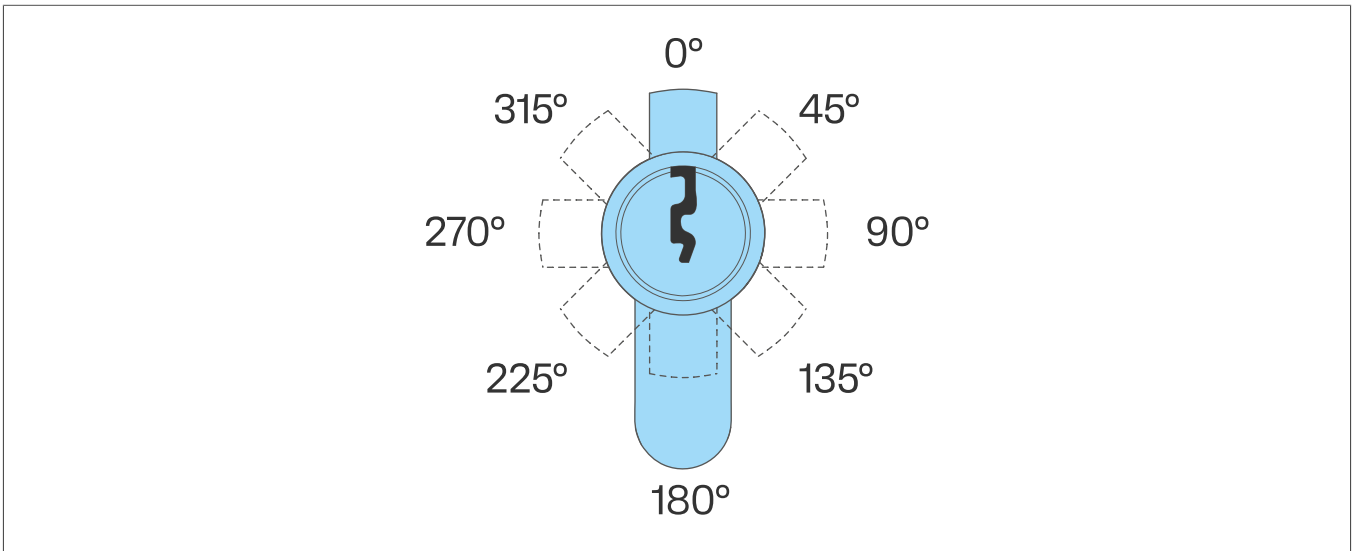


Fig. 2: Lock bit positions

In order to change the switching position, the lock bit (7) can be guided in the clevis (8) of the switch/push-button insert (Fig. 3, left) or can contact the clevis laterally (Fig. 3, right).

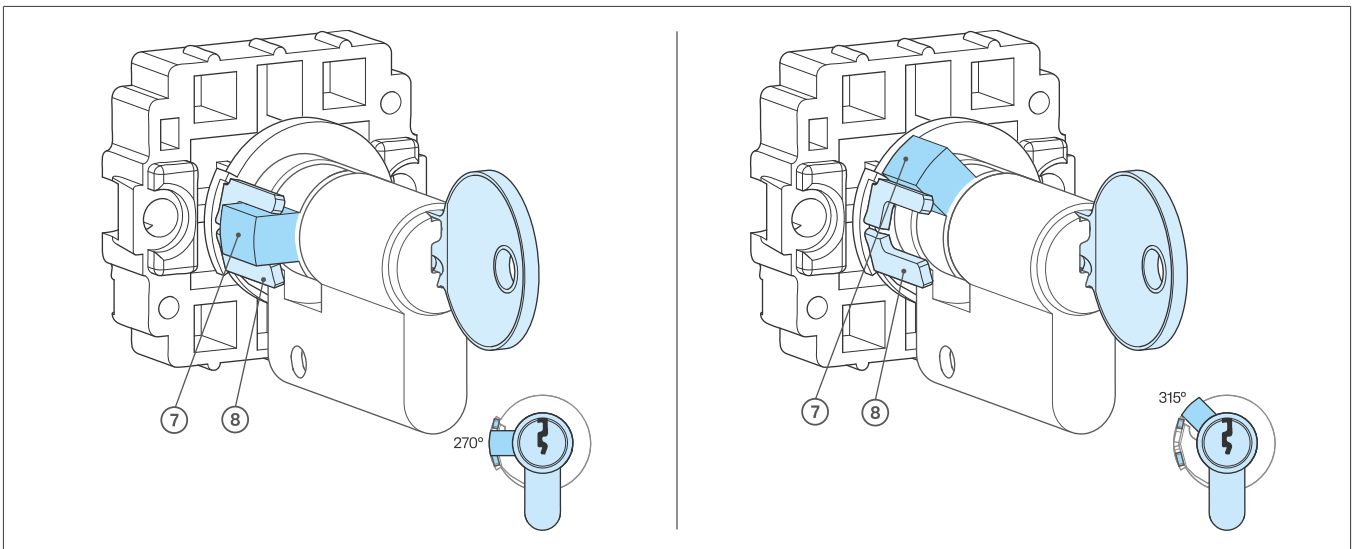


Fig. 3: Positioning of the lock bit

- ⑦ Lock bit
- ⑧ Clevis

The switching positions in which the key can be removed depend on the position of the lock bit on the profile half cylinder used. If the lock bit is guided in the fork, it can only be removed in one switch position (Fig. 4).

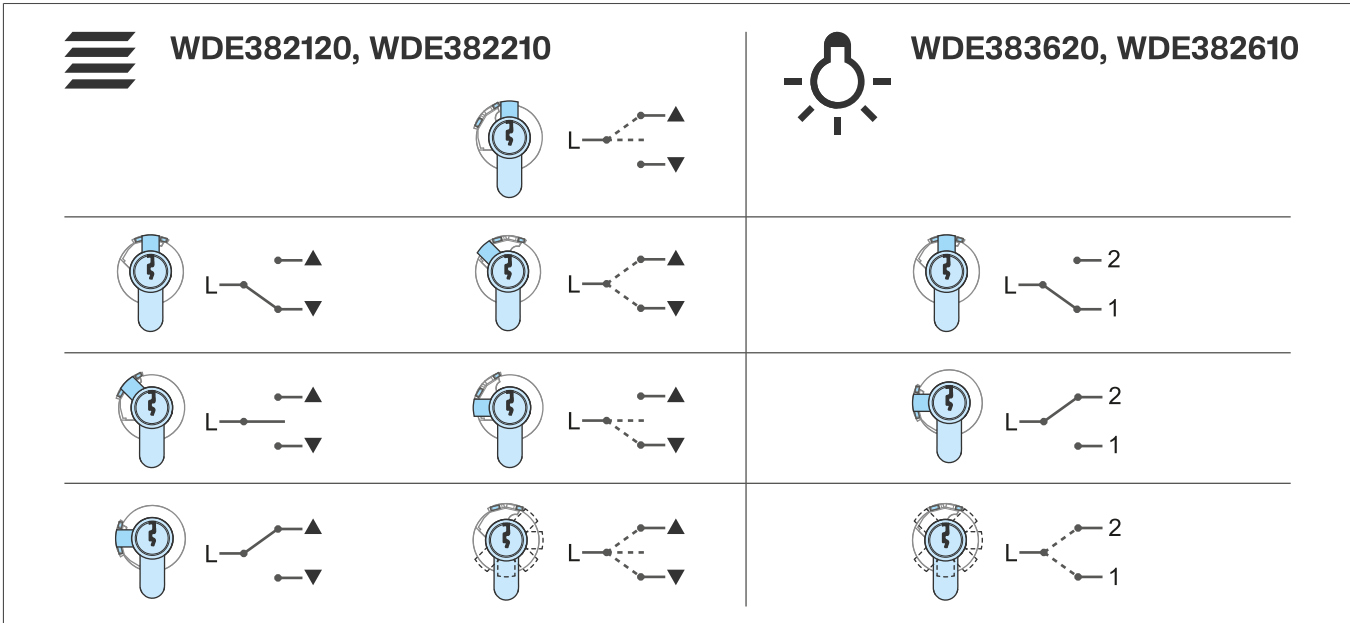


Fig. 4: Switch positions of key switches/key push buttons with removable key

In the 90°, 135°, 225° or 270° positions, the cover is locked in place by the lock bit, providing dismantling protection (Fig. 5).

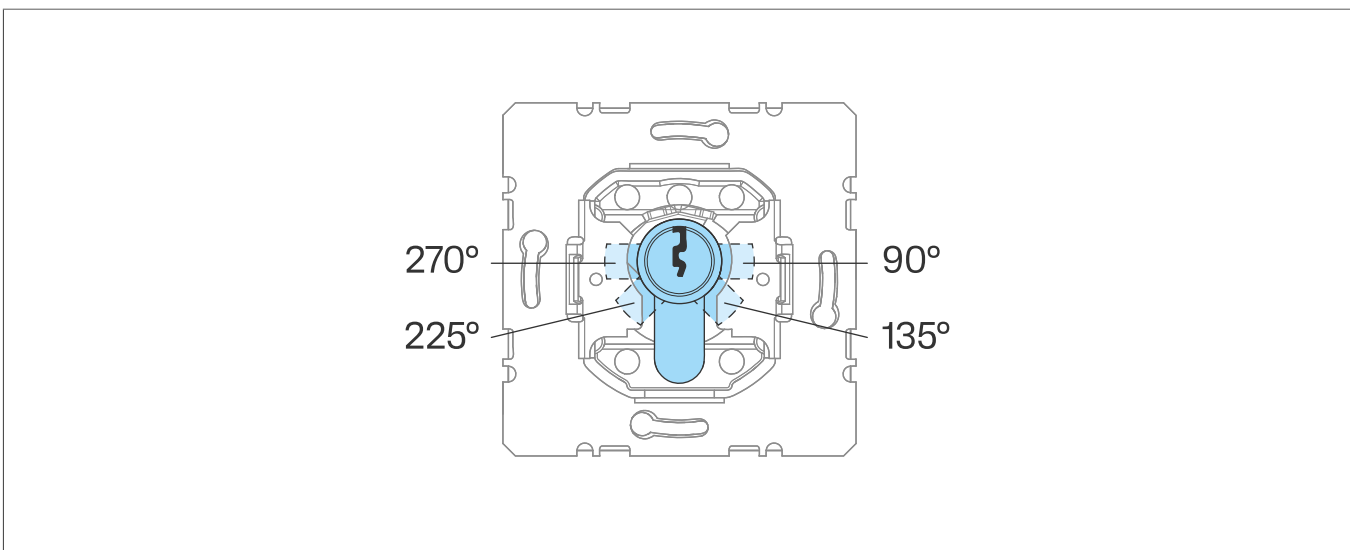


Fig. 5: Dismantling protection

- Push the locking pin (9) into the lock bit from the side and move the lock bit to the desired position (Fig. 6).

Installing profile half cylinder in centre plate

☑ The lock bit on the profile half-cylinder (2) is adjusted.

- 1 Turn the lock bit with the key to the 180° position and guide it from the front through the centre piece (3) (Fig. 6 A).
- 2 Connect the lock cylinder and the centre piece with screw (10) (Fig. 6 B).

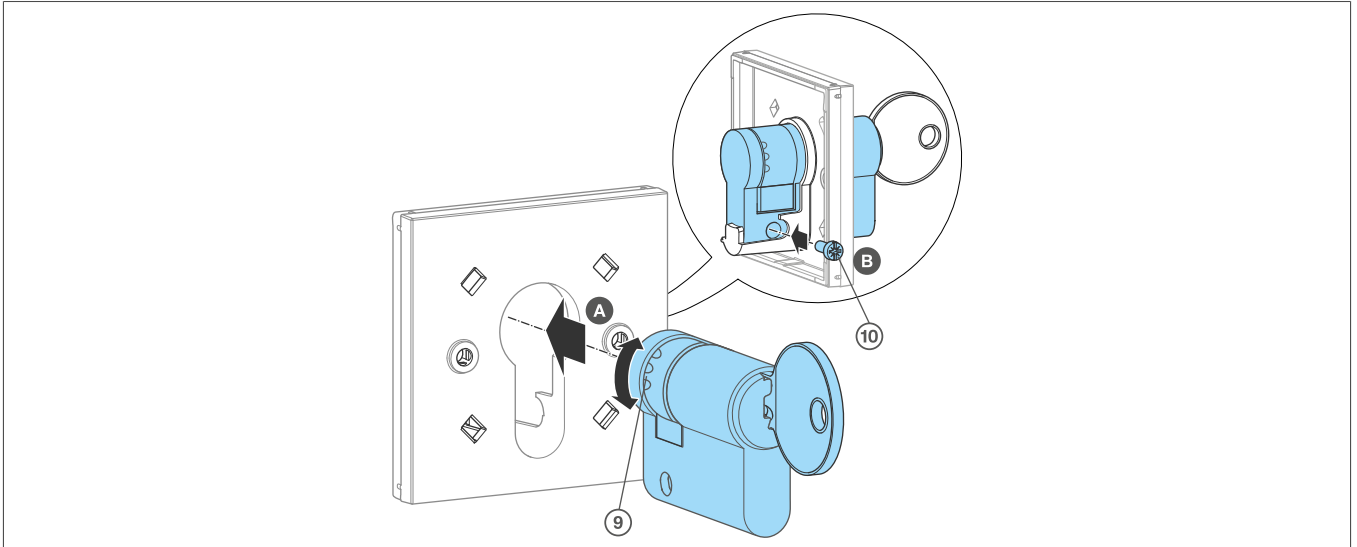


Fig. 6: Mounting the profile half-cylinder in the centre piece

- ⑨ Locking pin
- ⑩ Screw

Connecting and mounting the key switch/key push button



Danger

Electric shock when live parts are touched!
An electric shock can lead to death!

- Disconnect all connection cables before working on the device and cover any live parts in the area!

The key switch/key push button is intended for installation in a wall box according to DIN 49073, Part 1 with screw fastening.

- ① Connect switch/push-button insert (5) according to the labelling on the rear.
 - ② Position switch/push-button insert in the wall box (6) and screw in place. Note **TOP/OBEN** marking (Fig. 1).
 - ③ Fit the cover frame (4) on the switch/push-button insert.
 - ④ Use the key to move the lock bit into position. Insert the centre piece with the prepared profile half cylinder and screw it in place.
- Switching performance of key switches/key push buttons with a removable key depends on the setting of the lock bit (Fig. 4).
- ⑤ Remove the key.
 - ⑥ Snap on the cover (1) for the profile half cylinder.

6 Appendix

6.1 Technical data

Operating voltage	250 V~
Switching current:	
- WDE382120, WDE382210:	10 AX (100 W LED (SBL))
- WDE382610, WDE383620:	16 AX (200 W LED (SBL))
- WDE383110, WDE383120, WDE383210, WDE385620:	10 A

6.2 Accessories

Profile half cylinder:	
- With different lock systems	WDA7172
- With same lock systems	WDA7171

6.3 Disposal note



Correct disposal of this product (electrical waste).

(Applicable in the European Union and other European countries with separate collection systems)

This marking shown on the product or its documentation indicates that it should not be disposed of with other household waste at the end of its working life. To prevent possible harm to the environment or human health from uncontrolled waste disposal, please separate this device from other types of waste. Recycle the device responsibly to promote the sustainable reuse of material resources.

Household users should contact either the dealer where they purchased this product, or their local government office, for details of where and how they can take this device for environmentally safe disposal.

Commercial users should contact their supplier and check the terms and conditions of the purchase contract. This product should not be mixed with other commercial waste for disposal.



Berker GmbH & Co. KG

Zum Gunterstal

66440 Blieskastel

Germany

T +49 6842 945 0

F +49 6842 945 4625

info@hager.com

hager.com