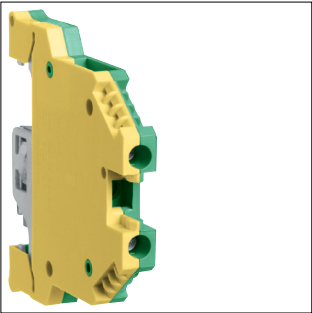


# Product Datasheet

## KXB04E



KXB04E

Earth terminal, 4mm<sup>2</sup>, screw connection

Technical Features

<b>Electric current</b>	
Rated current	0 A

<b>Power</b>	
Total power loss under IN	1 W

<b>Dimensions</b>	
Height	48.50 mm
Width	51 mm
Depth	6 mm

<b>Connectivity</b>	
Type of connection	Screw terminal

<b>Materials</b>	
Material	Polyamide (PA)

<b>Installation, mounting</b>	
Mounting on	DIN rail

<b>Connection</b>	
Cross-section flexible conductor	0.5 - 4 mm <sup>2</sup>
Cross-section rigid conductor	0.5 - 6 mm <sup>2</sup>

<b>Sustainability</b>	
RoHS conform	Yes