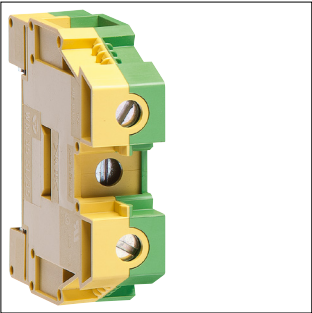


Product Datasheet

KXB35E



KXB35E

Earth terminal, 35mm², screw connection

Technical Features

Electric current	
Rated current	0 A

Power	
Total power loss under IN	1 W

Dimensions	
Height	51.50 mm
Width	54 mm
Depth	16 mm

Connectivity	
Type of connection	Screw terminal

Materials	
Material	Polyamide (PA)

Installation, mounting	
Mounting on	DIN rail

Connection	
Cross-section flexible conductor	35 mm ² max.
Cross-section rigid conductor	50 mm ² max.

Sustainability	
RoHS conform	Yes