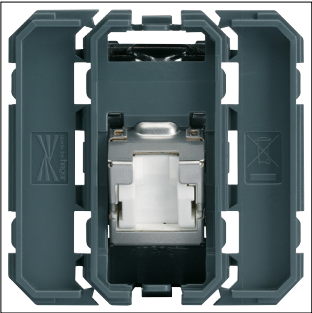


Product Datasheet

WXF232



WXF232

RJ45 socket gallery cat.6 STP 2 modules 45° inside

Technical Features

Equipment

Number of outputs	1
-------------------	---

Use conditions

Operating temperature	-10 - 35 °C
-----------------------	-------------

Equipment

With hinged lid	No
-----------------	----

Materials

Colour	Grey
--------	------

Connection

Connector/plug type	STP
---------------------	-----

Safety

Ingress Protection (IP) class	IP20
-------------------------------	------

Texts

Type of connection	With IDC terminals
--------------------	--------------------

Sustainability

Halogen free	Yes
REACH-SVHC free	Yes
RoHS conform	Yes