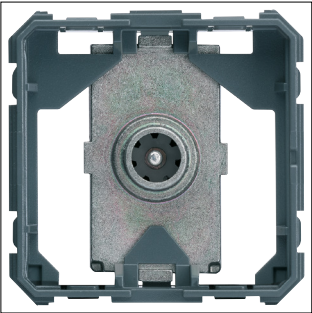


Product Datasheet

WXF251



WXF251

TV socket gallery passthrough BNC socket 10 db 2 modules

Technical Features

Capacity

Number of gangs	1
Number of modules	2

Connectivity

Mounting type	Click mounting
---------------	----------------

Attenuation

Tap loss at 860 MHz	10 dB
Through loss 860 MHz	10 dB

Connection

Connector/plug type	Pass-through socket
---------------------	---------------------

Frequency

Frequency bandwidth	4 - 862 MHz
---------------------	-------------

Equipment

Number of outputs	1
-------------------	---

Materials

Material	Metal Plastic
Colour	Grey
RAL code	7011

Dimensions

Depth	34 mm
-------	-------

Installation, mounting

Mounting on	Flush mounting
-------------	----------------

Identification

Assembly arrangement	Middle plate
----------------------	--------------

Sustainability

REACH-SVHC free	Yes
RoHS conform	Yes