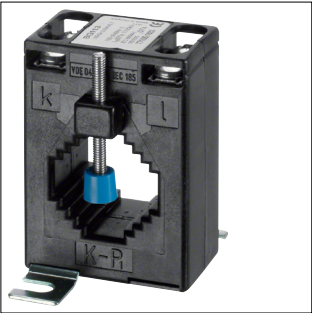


# Product Datasheet

## SRA01005



SRA01005

### Bar/Cable-through Current Transformer BG 113 100/5A 2,5VA Class 1

#### Technical Features

##### Functions

Accuracy class	1
----------------	---

##### Power

Power	2.50 VA
Total power loss under I <sub>N</sub>	0.70 W

##### Dimensions

Height	70 mm
Width	49.50 mm
Depth	30 mm
Height of opening	20 mm
Width of opening	29.50 mm

##### Connectivity

Type of connection	Screw terminal
--------------------	----------------

##### Frequency

Frequency	50 - 60 Hz
-----------	------------

##### Voltage

Rated insulation voltage U <sub>i</sub>	3000 V
---	--------

##### Use conditions

Operating temperature	-40 - 40 °C
Storage/transport temperature	-40 - 40 °C

##### Connection

Cross-section flexible conductor	1.5 - 6 mm <sup>2</sup>
Cross-section rigid conductor	1.5 - 6 mm <sup>2</sup>

##### Safety

Ingress Protection (IP) class	IP10
-------------------------------	------

##### Electric current

Max. intensity of primary	100 A
Max. intensity of secondary	5 A

##### Installation, mounting

Mounting on	DIN rail Mounting plate
-------------	----------------------------

##### Sustainability

Halogen free	Yes
REACH-SVHC free	Yes
RoHS conform	Yes