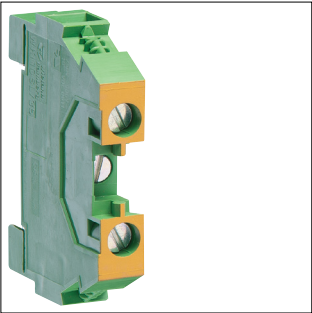


Product Datasheet

KXA10E



KXA10E

Earth terminal 10mm², screw connection

Technical Features

Electric current	
Rated current	0 A

Power	
Total power loss under IN	1 W

Dimensions	
Height	51.50 mm
Width	58 mm
Depth	10 mm

Connectivity	
Type of connection	Screw terminal

Materials	
Material	Polyamide (PA)

Installation, mounting	
Mounting on	DIN rail

Connection	
Cross-section flexible conductor	1 - 10 mm ²
Cross-section rigid conductor	1.5 - 16 mm ²

Sustainability	
RoHS conform	Yes