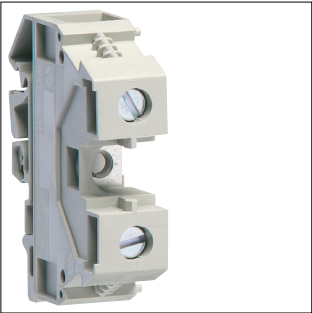


Product Datasheet

KXA35L



KXA35L

Feed-through terminal-phase, 35mm², 400V/125A, screw connection

Technical Features

Electric current	
Rated current	125 A

Dimensions	
Height	51.50 mm
Width	58 mm
Depth	16 mm

Installation, mounting	
Mounting on	DIN rail

Connection	
Cross-section flexible conductor	35 mm² max.
Cross-section rigid conductor	50 mm² max.

Materials	
Colour	Grey
Material	Polyamide (PA)

Connectivity	
Type of connection	Screw terminal

Sustainability	
RoHS conform	Yes