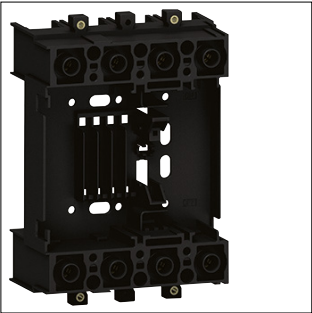


# Product Datasheet

## HYT201H



HYT201H

### Plug-in base for P250 4P

#### Technical Features

Electric current	
Rated current	250 A
Architecture	
Type of pole	4P
Installation, mounting	
Suitable for busbar mounting	No
Sustainability	
REACH-SVHC free	Yes
RoHS conform	Yes