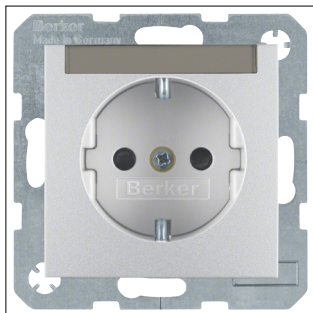


# Product Datasheet

## 41491404



41491404

SCHUKO soc.out.,lab.field,enhncd contact prot.,screw-in lift term.,B.7,al.lacq.

### Technical Features

#### Electric current

Rated current	16 A
---------------	------

#### Voltage

Rated voltage	250 V
Nominal voltage	250 - 250 V

#### Frequency

Frequency	50 - 60 Hz
-----------	------------

#### Materials

Colour	Aluminium
RAL code	9006
Surface finish	Matt
Material	Thermoplastic
Treatment	Untreated Varnished

#### Dimensions

Height	71 mm
Width	71 mm
Number of units	1
Built-in depth	32 mm

#### Installation, mounting

Mounting on	Flush mounting
-------------	----------------

#### Connectivity

Type of connection	Screw terminal
Mounting type	Screw mounting Claw mounting

#### Equipment

Connector/plug type socket outlet	SCHUKO
Rotated central insert	No
With hinged lid	No
With round protective earth pin	No
With signal lamp	No
With lock	No

#### Accessories

Has labelling field	Yes
---------------------	-----

#### Capacity

Number of modules	1
-------------------	---

#### Safety

With enhanced contact protection	Yes
Impact resistance IK	IK05
Ingress Protection (IP) class	IP20

#### Functions

With orientation lighting	No
With function lighting	No

#### Texts

Imprint	Without imprint
Cover	Central cover plate
Protection	Enhanced contact protection

Product Datasheet

41491404

Texts	
Type of connection	With screw-in lift terminals
Labelling	With labelling field
Suitable for	
S.x/B.x	
Sustainability	
RoHS conform	Yes