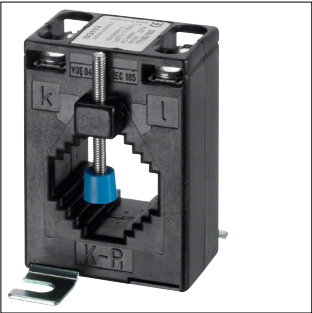


Product Datasheet

SRA02505



SRA02505

Bar/Cable-through Current Transformer BG 113 250/5A 2,5VA Class 1

Technical Features

Functions

Accuracy class	1
----------------	---

Power

Power	2.50 VA
Total power loss under I _N	2.60 W

Dimensions

Height	70 mm
Width	49.50 mm
Depth	30 mm
Height of opening	20 mm
Width of opening	29.50 mm

Connectivity

Type of connection	Screw terminal
--------------------	----------------

Frequency

Frequency	50 - 60 Hz
-----------	------------

Voltage

Rated insulation voltage U _i	3000 V
---	--------

Use conditions

Operating temperature	-40 - 40 °C
Storage/transport temperature	-40 - 40 °C

Connection

Cross-section flexible conductor	1.5 - 6 mm ²
Cross-section rigid conductor	1.5 - 6 mm ²

Safety

Ingress Protection (IP) class	IP10
-------------------------------	------

Electric current

Max. intensity of primary	250 A
Max. intensity of secondary	5 A

Installation, mounting

Mounting on	DIN rail Mounting plate
-------------	----------------------------

Sustainability

Halogen free	Yes
REACH-SVHC free	Yes
RoHS conform	Yes