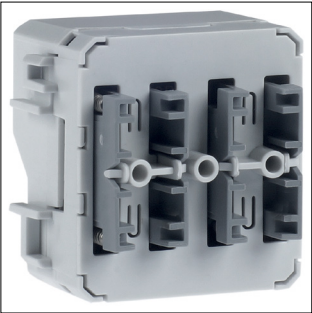


Product Datasheet

80141200



80141200



Push-button module 1gang, bus coupling unit, KNX-W.1, light grey/grey gl./mat

Technical Features

Installation, mounting

Mounting on	Flush mounting Surface mounting
-------------	------------------------------------

Use conditions

Operating temperature	-40 - 30 °C
-----------------------	-------------

Electric current

Bus current consumption data transfer	10 mA
---------------------------------------	-------

Functions

With room temperature controller	No
----------------------------------	----

Dimensions

Built-in depth	22 mm
Built-in depth flush-mounted boxes	32 mm
Height	44 mm
Width	45.70 mm
Depth	40.50 mm

Equipment

Number of actuation points	1
----------------------------	---

Controls and indicators

With LED indication	Yes
---------------------	-----

Materials

Colour	Grey
RAL code	7035
Material	Duroplastic
Surface finish	Glossy Matt

Accessories

Has labelling field	No
---------------------	----

Screen

With display	No
--------------	----

Texts

Function	Function for manual interruption of automatic functions already triggered
----------	---

Sustainability

RoHS conform	Yes
--------------	-----