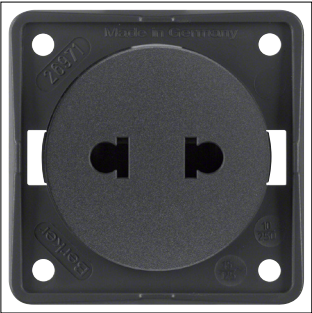


Product Datasheet  
962572505



962572505

Plug w.out earth.cont. Euro-Americ. stand., cont.prot., screw term, Int., anthr.

Technical Features

Electric current

Rated current	10 A
---------------	------

Voltage

Rated voltage	250 V
Nominal voltage	250 - 250 V

Frequency

Frequency	50 - 50 Hz
-----------	------------

Materials

Colour	Anthracite
RAL code	7021
Surface finish	Matt
Material	Thermoplastic
Treatment	Untreated

Dimensions

Height	55.50 mm
Width	55.50 mm
Built-in depth flush-mounted boxes	32 mm

Installation, mounting

Mounting on	Flush mounting
-------------	----------------

Connectivity

Type of connection	Screw terminal
Mounting type	Built in installation Screw mounting

Equipment

Connector/plug type socket outlet	Without protective contact
Rotated central insert	No
With hinged lid	No
With signal lamp	No
With lock	No

Accessories

Has labelling field	No
---------------------	----

Capacity

Number of modules	1
-------------------	---

Safety

With enhanced contact protection	No
Impact resistance IK	IK05
Ingress Protection (IP) class	IP20

Functions

With orientation lighting	No
With function lighting	No

Texts

Imprint	Without imprint
Cover	Central cover plate
Protection	Enhanced contact protection
Type of connection	With screw terminals

Suitable for

integro	
---------	--

Product Datasheet  
962572505

Sustainability	
RoHS conform	Yes